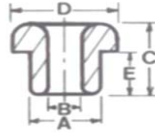


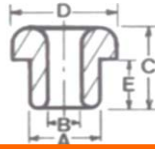


# Flanged Eyelets



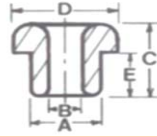
Part No.	A		B		C		D		E	
	inches	mm	inches	mm	inches	mm	inches	mm	Inches	mm
E1000	.079	2.0	.039	1.0	.197	5.0	.122	3.1	.158	4.0
E1000-1	.079	2.0	.039	1.0	.079	2.0	.122	3.1	.059	1.5
E1000-2	.079	2.0	.039	1.0	.118	3.0	.122	3.1	.079	2.0
E1001	.099	2.5	.059	1.5	.142	3.6	.150	3.8	.102	2.6
E1002	.099	2.5	.059	1.5	.591	15.0	.185	4.7	.493	12.5
E1003	.099	2.5	.059	1.5	.268	6.8	.150	3.8	.217	5.5
E1004	.110	2.8	.059	1.5	.087	2.2	.189	4.8	.039	1.0
E1005	.110	2.8	.059	1.5	.126	3.2	.189	4.8	.079	2.0
E1006	.114	2.9	.059	1.5	.156	4.0	.189	4.8	.118	3.0
E1007	.110	2.8	.059	1.5	.256	6.5	.189	4.8	.197	5.0
E1008	.110	2.8	.047	1.2	.126	3.2	.189	4.8	.079	2.0
E1009	.110	2.8	.047	1.2	.165	4.2	.189	4.8	.118	3.0
E1010	.118	3.0	.067	1.7	.118	3.0	.165	4.2	.079	2.0
E1010-1	.124	3.14	.063	1.6	.126	3.2	.217	5.5	.095	2.4
E1010-2	.118	3.0	.079	2.0	.189	4.8	.165	4.2	.158	4.0
E1011	.118	3.0	.067	1.7	.165	4.2	.165	4.2	.118	3.0
E1011-1	.118	3.0	.067	1.7	.079	2.0	.165	4.2	.039	1.0
E1012	.126	3.2	.063	1.6	.205	5.2	.221	5.6	.158	4.0
E1013	.126	3.2	.063	1.6	.185	4.7	.221	5.6	.138	3.5
E1014	.126	3.2	.063	1.6	.130	3.3	.221	5.6	.099	2.5
E1014-1	.146	3.7	.079	2.0	.260	6.6	.185	4.7	.197	5.0
E1014-3	.142	3.6	.071	1.8	.146	3.7	.236	6.0	.099	2.5
E1014-5	.146	3.7	.079	2.0	.189	4.8	.185	4.7	.142	3.6
E1015	.150	3.8	.059	1.5	.177	4.5	.217	5.5	.118	3.0
E1015-1	.150	3.8	.075	1.9	.165	4.2	.217	5.5	.118	3.0
E1016	.150	3.8	.079	2.0	.158	4.0	.276	7.0	.099	2.5
E1016-1	.150	3.8	.079	2.0	.158	4.0	.276	7.0	.099	2.5
E1017	.150	3.8	.079	2.0	.177	4.5	.229	5.8	.099	2.5
E1017-1	.154	3.9	.087	2.2	.209	5.3	.217	5.5	.169	4.3
E1017-3	.158	4.0	.099	2.5	.197	5.0	.197	5.0	.138	3.5
E1017-5	.158	4.0	.099	2.5	.158	4.0	.197	5.0	.118	3.0
E1017-7	.158	4.0	.079	2.0	.177	4.5	.236	6.0	.099	2.5
E1018	.169	4.3	.079	2.0	.315	8.0	.232	5.9	.236	6.0
E1019	.169	4.3	.079	2.0	.362	9.2	.232	5.9	.311	7.9

# Flanged Eyelets



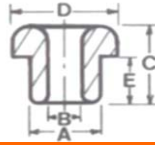
Part No.	A		B		C		D		E	
	inches	mm	inches	mm	inches	mm	inches	mm	Inches	mm
E1020	.165	4.2	.099	2.5	.169	4.3	.229	5.8	.118	3.0
E1021	.165	4.2	.099	2.5	.225	5.7	.229	5.8	.185	4.7
E1021-1	.177	4.5	.075	1.9	.150	3.8	.260	6.6	.110	2.8
E1022	.189	4.8	.130	3.3	.177	4.5	.256	6.5	.118	3.0
E1023	.189	4.8	.130	3.3	.221	5.6	.256	6.5	.158	4.0
E1023-1	.201	5.1	.091	2.3	.189	4.8	.280	7.1	.126	3.2
E1024	.197	5.0	.079	2.0	.181	4.6	.260	6.6	.118	3.0
E1025	.197	5.0	.079	2.0	.276	7.0	.260	6.6	.217	5.5
E1026	.197	5.0	.079	2.0	.138	3.5	.260	6.6	.099	2.5
E1026-1	.209	5.3	.130	3.3	.205	5.2	.268	6.8	.158	4.0
E1026-2	.201	5.1	.130	3.3	.217	5.5	.268	6.8	.158	4.0
E1026-3	.197	5.0	.079	2.0	.504	12.8	.260	6.6	.445	11.3
E1026-5	.197	5.0	.079	2.0	.315	8.0	.260	6.6	.256	6.5
E1027	.209	5.3	.130	3.3	.217	5.5	.268	6.8	.158	4.0
E1027-1	.205	5.2	.091	2.3	.189	4.8	.280	7.1	.126	3.2
E1028	.201	5.1	.130	3.4	.276	7.0	.268	7.1	.197	5.0
E1029	.221	5.6	.122	3.1	.252	6.4	.311	7.9	.201	5.1
E1030	.225	5.7	.162	4.1	.197	5.0	.311	7.9	.126	3.2
E1031	.229	5.8	.114	2.9	.236	6.0	.307	7.8	.158	4.0
E1032	.229	5.8	.114	2.9	.299	7.6	.307	7.8	.225	5.7
E1033	.229	5.8	.114	2.9	.303	7.7	.307	7.8	.236	6.0
E1034	.229	5.8	.114	2.9	.138	3.5	.307	7.8	.079	2.0
E1035	.232	5.9	.118	3.0	.189	4.8	.327	8.3	.118	3.0
E1036G	.232	5.9	.138	3.5	.177	4.5	.296	7.5	.138	3.5
E1037	.232	5.9	.134	3.4	.197	5.0	.307	7.8	.118	3.0
E1038	.232	5.9	.134	3.4	.276	7.0	.307	7.8	.197	5.0
E1039	.236	6.0	.134	3.4	.256	6.5	.307	7.8	.197	5.0
E1040	.232	5.9	.134	3.4	.315	8.0	.307	7.8	.252	6.4
E1041	.236	6.0	.126	3.2	.142	3.6	.299	7.6	.079	2.0
E1041-1	.236	6.0	.138	3.5	.201	5.1	.296	7.5	.158	4.0
E1042	.244	6.2	.118	3.0	.276	7.0	.315	8.0	.197	5.0

# Flanged Eyelets



Part No.	A		B		C		D		E	
	inches	mm	inches	mm	inches	mm	inches	mm	inches	mm
E1043	.240	6.1	.162	4.1	.315	8.0	.339	8.6	.256	6.5
E1044	.240	6.1	.162	4.1	.386	9.8	.402	10.2	.307	7.8
E1045	.244	6.2	.138	3.5	.276	7.0	.319	8.1	.197	5.0
E1046	.240	6.1	.134	3.4	.197	5.0	.315	8.0	.138	3.5
E1047	.236	6.0	.126	3.2	.225	5.7	.299	7.6	.162	4.1
E1047-A	.236	6.0	.138	3.5	.177	4.5	.296	7.5	.138	3.5
E1047-2	.244	6.2	.162	4.1	.315	8.0	.402	10.2	.260	6.6
E1047-4	.244	6.2	.138	3.5	.110	2.8	.319	8.1	.071	1.8
E1047-6	.244	6.2	.126	3.2	.177	4.5	.307	7.8	.138	3.5
E1048	.248	6.3	.114	2.9	.185	4.7	.418	10.6	.118	3.0
E1048-1	.250	6.35	.114	2.9	.410	10.4	.418	10.6	.331	8.4
E1049	.248	6.3	.138	3.5	.099	2.5	.315	8.0	.059	1.5
E1050	.248	6.3	.138	3.5	.138	3.5	.315	8.0	.099	2.5
E1051	.248	6.3	.138	3.5	.177	4.5	.315	8.0	.138	3.5
E1052	.252	6.4	.158	4.0	.331	8.4	.343	8.7	.264	6.7
E1053	.252	6.4	.158	4.0	.256	6.5	.343	8.7	.197	5.0
E1054	.252	6.4	.158	4.0	.181	4.6	.343	8.7	.126	3.2
E1055	.260	6.6	.150	3.8	.236	6.0	.343	8.7	.158	4.0
E1056	.260	6.6	.150	3.8	.197	5.0	.343	8.7	.118	3.0
E1057	.260	6.6	.150	3.8	.296	7.5	.343	8.7	.236	6.0
E1057-1	.264	6.7	.158	4.0	.315	8.0	.355	9.0	.236	6.0
E1058	.266	6.75	.146	3.7	.181	4.6	.362	9.2	.118	3.0
E1058-1	.276	7.0	.177	4.5	.181	4.6	.362	9.2	.118	3.0
E1058-3	.272	6.9	.087	2.2	.315	8.0	.563	14.3	.197	5.0
E1058-5	.272	6.9	.173	4.4	.197	5.0	.473	12.0	.095	2.4
E1059	.272	6.9	.158	4.0	.386	9.8	.398	10.1	.315	8.0
E1060	.272	6.9	.177	4.5	.276	7.0	.362	9.2	.209	5.3
E1060-2	.272	6.9	.177	4.5	.225	5.7	.362	9.2	.158	4.0
E1060-4	.276	7.0	.158	4.0	.351	8.9	.355	9.0	.276	7.0
E1060-6	.280	7.1	.189	4.8	.299	7.6	.390	9.9	.236	6.0
E1060-8	.280	7.1	.110	2.8	.197	5.0	.362	9.2	.130	3.3
E1061	.280	7.1	.189	4.8	.197	5.0	.390	9.9	.118	3.0
E1062	.280	7.1	.189	4.8	.264	6.7	.390	9.9	.197	5.0
E1062-2	.280	7.1	.189	4.8	.299	7.6	.390	9.9	.236	6.0

# Flanged Eyelets



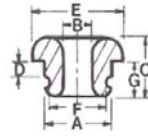
Part No.	A		B		C		D		E	
	inches	mm	inches	mm	inches	mm	inches	mm	inches	mm
E1062-4	.284	7.2	.189	4.8	.217	5.5	.390	9.9	.158	4.0
E1063	.288	7.3	.134	3.4	.327	8.3	.347	8.8	.276	7.0
E1064	.288	7.3	.134	3.4	.264	6.7	.347	8.8	.193	4.9
E1065	.288	7.3	.154	3.9	.355	9.0	.374	9.5	.276	7.0
E1066	.288	7.3	.134	3.4	.433	11.0	.347	8.8	.355	9.0
E1067	.292	7.4	.154	3.9	.315	8.0	.374	9.5	.236	6.0
E1068	.292	7.4	.217	5.5	.394	10.0	.378	9.6	.315	8.0
E1069	.288	7.3	.154	3.9	.292	7.4	.374	9.5	.217	5.5
E1069-1	.296	7.5	.217	5.5	.532	13.5	.374	9.5	.453	11.5
E1069-2	.296	7.5	.146	3.7	.284	7.2	.378	9.6	.197	5.0
E1069-3	.296	7.5	.217	5.5	.394	10.0	.378	9.6	.315	8.0
E1070	.297	7.55	.213	5.4	.374	9.5	.394	10.0	.315	8.0
E1071	.299	7.6	.189	4.8	.315	8.0	.422	10.7	.236	6.0
E1072	.296	7.5	.173	4.4	.276	7.0	.383	9.7	.197	5.0
E1073	.299	7.6	.189	4.8	.343	8.7	.422	10.7	.276	7.0
E1074	.299	7.6	.189	4.8	.256	6.5	.422	10.7	.177	4.5
E1074-1	.299	7.6	.197	5.0	.114	2.9	.339	8.6	.079	2.0
E1075	.299	7.6	.189	4.8	.197	5.0	.418	10.6	.158	4.0
E1075-1	.303	7.7	.217	5.5	.394	10.0	.378	9.6	.315	8.0
E1075-3	.307	7.8	.236	6.0	.158	4.0	.378	9.6	.188	3.0
E1076	.311	7.9	.158	4.0	.276	7.0	.394	10.0	.197	5.0
E1077	.315	8.0	.162	4.1	.327	8.3	.394	10.0	.252	6.4
E1077-1	.315	8.0	.162	4.1	.248	6.3	.394	10.0	.173	4.4
E1077-3	.323	8.2	.197	5.0	.315	8.0	.429	10.9	.236	6.0
E1077-5	.323	8.2	.197	5.0	.394	10.0	.429	10.9	.315	8.0
E1078	.331	8.4	.189	4.8	.236	6.0	.422	10.7	.158	4.0
E1079	.335	8.5	.162	4.1	.276	7.0	.394	10.0	.217	5.5
E1080	.339	8.6	.189	4.8	.552	14.0	.422	10.7	.473	12.0
E1081	.339	8.6	.189	4.8	.383	9.7	.422	10.7	.307	7.8
E1081-2	.339	8.6	.189	4.8	.315	8.0	.422	10.7	.236	6.0
E1082	.339	8.6	.189	4.8	.197	5.0	.422	10.7	.138	3.5
E1083	.347	8.8	.189	4.8	.394	10.0	.418	10.6	.327	8.3
E1084	.347	8.8	.209	5.3	.670	17.0	.508	12.9	.552	14.0
E1085	.347	8.8	.209	5.3	.520	13.2	.508	12.9	.445	11.3

# Flanged Eyelets



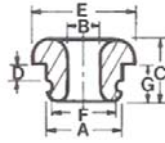
Part No.	A		B		C		D		E	
	inches	mm	inches	mm	inches	mm	inches	mm	inches	mm
E1086	.351	8.9	.158	4.0	.315	8.0	.709	18.0	.138	3.5
E1087	.347	8.8	.189	4.8	.512	13.0	.418	10.6	.445	11.3
E1087-2	.355	9.0	.244	6.2	.296	7.5	.500	12.7	.197	5.0
E1088	.359	9.1	.209	5.3	.343	8.7	.457	11.6	.272	6.9
E1089	.355	9.0	.197	5.0	.749	19.0	.433	11.0	.670	17.0
E1089-1	.355	9.0	.158	4.0	.276	7.0	.512	13.0	.197	5.0
E1090	.370	9.4	.244	6.2	.414	10.5	.473	12.0	.331	8.4
E1090-2	.370	9.4	.244	6.2	.252	6.4	.472	12.0	.156	4.0
E1091	.378	9.6	.244	6.2	.173	4.4	.473	12.0	.079	2.0
E1092	.378	9.6	.244	6.2	.181	4.6	.473	12.0	.099	2.5
E1092-2	.374	9.5	.217	5.5	.323	8.2	.461	11.7	.236	6.0
E1093	.375	9.52	.185	4.7	.374	9.5	.500	12.7	.248	6.3
E1094	.374	9.5	.260	6.6	.414	10.5	.512	13.0	.355	9.0
E1095	.378	9.6	.244	6.2	.355	9.0	.473	12.0	.276	7.0
E1095-1	.370	9.4	.244	6.2	.311	7.9	.473	12.0	.217	5.5
E1096	.378	9.6	.244	6.2	.414	10.5	.473	12.0	.331	8.4
E1097	.386	9.8	.209	5.3	.985	25.0	.579	14.1	.867	22.0
E1097-1	.390	9.9	.248	6.3	.615	15.6	.532	13.5	.433	11.0
E1098	.390	9.9	.240	6.1	.173	4.4	.469	11.9	.114	2.9
E1098-2	.390	9.9	.276	7.0	.315	8.0	.477	12.1	.236	6.0
E1098-4	.390	9.9	.276	7.0	.236	6.0	.477	12.1	.158	4.0
E1098-6	.390	9.9	.276	7.0	.433	11.0	.477	12.1	.347	8.8
E1099	.394	10.0	.236	6.0	.591	15.0	.473	12.0	.433	11.0
E1099-1	.394	10.0	.276	7.0	.197	5.0	.477	12.1	.118	3.0
E1099-2	.394	10.0	.193	4.9	.335	8.5	.473	12.0	.256	6.5
E1099-3	.429	10.9	.256	6.5	.473	12.0	.552	14.0	.378	9.6
E1100	.433	11.0	.303	7.7	.433	11.0	.552	14.0	.335	8.5
E1100-2	.433	11.0	.256	6.5	.362	9.2	.552	14.0	.266	6.75
E1101	.445	11.3	.276	7.0	.355	9.0	.552	14.0	.276	7.0
E1101-2	.445	11.3	.276	7.0	.276	7.0	.552	14.0	.179	5.0
E1102	.465	11.8	.299	7.6	.402	10.2	.607	15.4	.284	7.2
E1102-1	.433	11.0	.303	7.7	.256	6.5	.552	14.0	.197	5.0

# Grooved Eyelets



Part No	A		B		C		D		E		F		G	
	Inch	Mm	Inch	Mm	Inch	Mm	Inch	Mm	Inch	Mm	Inch	Mm	Inch	mm
GE2000G	.169	4.3	.059	1.5	.189	4.8	.189	1.4	.229	5.8	.142	3.6	.138	3.5
GE2000	.173	4.4	.059	1.5	.189	4.8	.063	1.6	.229	5.8	.142	3.6	.138	3.5
GE2001	.177	4.5	.079	2.0	.189	4.8	.075	1.9	.225	5.7	.150	3.8	.146	3.7
GE2002	.229	5.8	.114	2.9	.256	6.5	.079	2.0	.030	7.7	.193	4.9	.189	4.8
GE2002-1	.229	5.8	.118	3.0	.276	7.0	.039	1.0	.327	8.3	.177	4.5	.197	5.0
GE2002-3	.229	5.8	.114	2.9	.252	6.4	.079	2.0	.303	7.7	.193	4.9	.185	4.7
GE2002-4	.232	5.9	.118	3.0	.256	6.5	.087	2.2	.327	8.3	.201	5.1	.193	4.9
GE2003	.236	6.0	.126	3.2	.201	5.1	.055	1.4	.299	7.6	.205	5.2	.150	3.8
GE2004	.244	6.2	.118	3.0	.229	5.8	.063	1.6	.315	8.0	.205	5.2	.158	4.0
GE2004-1	.248	6.3	.110	2.8	.229	5.8	.063	1.6	.311	7.9	.205	5.2	.158	4.0
GE2004-2	.248	6.3	.118	3.0	.229	5.8	.059	1.5	.315	8.0	.205	5.2	.158	4.0
GE2005	.240	6.1	.118	3.0	.414	10.5	.158	4.0	.315	8.0	.213	5.4	.276	7.0
GE2006	.260	6.6	.150	3.8	.382	9.7	.197	5.0	.343	8.7	.221	5.6	.307	7.8
GE2007	.260	6.6	.158	4.0	.315	8.0	.079	2.0	.355	9.0	.221	5.6	.197	5.0
GE2008	.256	6.5	.150	3.8	.229	5.8	.189	1.4	.343	8.7	.217	5.5	.162	4.1
GE2009	.260	6.6	.150	3.8	.221	5.6	.067	1.7	.343	8.7	.225	5.7	.158	4.0
GE2009-1	.260	6.6	.150	3.8	.236	6.0	.059	1.5	.343	8.7	.225	5.7	.165	4.2
GE2010	.248	7.2	.158	4.0	.315	8.0	.126	3.2	.406	10.3	.236	6.0	.248	6.3
GE2011	.288	7.3	.134	3.4	.303	7.7	.122	3.1	.347	8.8	.229	5.8	.225	5.7
GE2012	.288	7.3	.134	3.4	.299	7.6	.106	2.7	.347	8.8	.225	5.7	.225	5.7
GE2013	.288	7.3	.134	3.4	.457	11.6	.254	6.45	.347	8.8	.232	5.9	.382	9.7
GE2013-1	.288	7.3	.134	3.4	.418	10.6	.236	6.0	.347	8.8	.232	5.9	.339	8.6
GE2014	.296	7.5	.173	4.4	.296	7.5	.118	3.0	.382	9.7	.268	6.8	.229	5.8
GE2015	.296	7.5	.146	3.7	.378	9.6	.201	5.1	.378	9.6	.260	6.6	.292	7.4
GE2016	.299	7.6	.083	2.1	.426	10.8	.185	4.7	.493	12.5	.193	4.9	.331	8.4
GE2016-2	.307	7.8	.138	3.5	.374	9.5	.189	4.8	.370	9.4	.240	6.1	.296	7.5
GE2017	.307	7.8	.142	3.6	.319	8.1	.150	3.8	.370	9.4	.268	6.8	.252	6.4
GE2018	.311	7.9	.157	4.0	.414	10.5	.189	4.8	.394	10.0	.276	7.0	.327	8.3
GE2019	.311	7.9	.157	4.0	.264	6.7	.079	2.0	.394	10.0	.280	7.1	.193	4.9
GE2019-1	.296	7.5	.189	4.8	.406	10.3	.250	6.35	.422	10.7	.252	6.4	.335	8.5
GE2020	.315	8.0	.177	4.5	.185	4.7	.047	1.2	.398	10.1	.276	7.9	.130	3.3
GE2020-2	.315	8.0	.063	1.6	.236	6.0	.079	2.0	.473	12.0	.296	7.5	.138	3.5
GE2020-4	.315	8.0	.157	4.0	.315	8.0	.157	4.0	.374	9.5	.280	7.1	.256	3.5

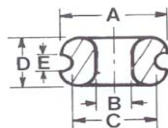
# Grooved Eyelets



Part No	A		B		C		D		E		F		G	
	Inch	Mm	Inch	Mm	Inch	Mm	Inch	Mm	Inch	Mm	Inch	Mm	Inch	mm
GE2021	.311	7.9	.150	3.8	.335	8.5	.146	3.7	.378	9.6	.280	7.1	.264	6.7
GE2021-1	.311	7.9	.083	2.1	.335	8.5	.150	3.8	.378	9.6	.276	7.0	.268	6.8
GE2021-2	.311	7.9	.122	3.1	.335	8.5	.150	3.8	.378	9.6	.276	7.0	.264	6.7
GE2022	.311	7.9	.047	1.2	.335	8.5	.146	3.7	.378	9.6	.276	7.0	.268	6.8
GE2023	.311	7.9	.063	1.6	.335	8.5	.146	3.7	.378	9.6	.276	7.0	.256	6.5
GE2024	.335	8.5	.162	4.1	.276	7.0	.095	2.4	.394	10.0	.272	6.9	.209	5.3
GE2025	.335	8.5	.162	4.1	.288	7.3	.142	3.6	.394	10.0	.292	7.4	.217	5.5
GE2026	.339	8.6	.189	4.8	.236	6.0	.079	2.0	.422	10.7	.296	7.5	.158	4.0
GE2027	.355	9.0	.154	3.9	.252	6.4	.039	1.0	.512	13.0	.307	7.8	.173	4.4
GE2028	.370	9.4	.244	6.2	.359	9.1	.134	3.4	.469	11.9	.315	8.0	.272	6.9
GE2028-1	.368	9.35	.205	5.2	.236	6.0	.059	1.5	.453	11.5	.323	8.2	.173	4.4
GE2028-A	.378	9.6	.244	6.2	.406	10.3	.118	3.0	.469	11.9	.315	8.0	.303	7.7
GE2028A1	.374	9.5	.240	6.1	.476	12.1	.110	2.8	.500	12.7	.319	8.1	.378	9.6
GE2028-2	.386	9.8	.256	6.5	.315	8.0	.126	3.2	.508	12.9	.335	8.5	.236	6.0
GE2028-3	.386	9.8	.185	4.7	.280	7.1	.087	2.2	.508	12.9	.339	8.6	.189	4.8
GE2029	.374	9.5	.244	6.2	.362	9.2	.138	3.5	.469	11.9	.315	8.0	.276	7.0
GE2029A	.374	9.5	.185	4.7	.472	12.0	.181	4.6	.500	12.7	.260	6.6	.398	10.1
GE2029B	.374	9.5	.244	6.2	.422	10.7	.193	4.0	.469	11.9	.315	8.0	.335	8.5
GE2029-1	.390	9.9	.244	6.2	.626	15.9	.315	8.0	.532	13.5	.359	9.1	.437	11.1
GE20291A	.389	9.9	.224	5.7	.126	3.2	.047	1.2	.452	11.5	.386	9.8	.079	2.0
GE2029-2	.465	11.8	.252	6.4	.559	14.2	.252	6.4	.634	16.1	.394	10.0	.437	11.1
GE20292P	.472	12.0	.283	7.2	.598	15.2	.260	6.6	.630	16.0	.413	10.5	.457	11.6
GE2029-3	.465	11.8	.303	7.7	.402	10.2	.118	3.0	.607	15.4	.418	10.6	.285	7.2
GE2029-6	.472	12.0	.303	7.7	.453	11.5	.197	5.0	.606	15.4	.409	10.4	.339	8.6
GE2030	.493	12.5	.185	4.7	.426	10.8	.122	3.1	.619	15.7	.406	10.3	.303	7.7
GE2030-2	.504	12.8	.343	8.7	.406	10.3	.165	4.2	.626	15.9	.441	11.2	.315	8.0
GE2031	.528	13.4	.146	3.7	.603	15.3	.276	7.0	1.51	38.4	.473	12.0	.394	10.0
GE2032	.536	13.6	.292	7.4	.690	17.5	.276	7.0	1.51	38.4	.394	10.0	.414	10.5
GE2032-1	.544	13.8	.158	4.0	.453	11.5	.264	6.7	.717	18.2	.481	12.2	.390	9.9
GE2032-8	.571	14.5	.338	8.6	.618	15.7	.094	2.4	.866	22.0	.504	12.8	.390	10.0
GE2033	.583	14.8	.386	9.8	.374	9.5	.110	2.8	.812	20.6	.528	13.4	.248	6.3
GE2033-2	.606	15.4	.362	9.2	.551	14.0	.189	4.8	.768	19.5	.520	13.2	.390	10.0
GE2033-6	.700	17.8	.461	11.7	.654	16.6	.335	8.5	.906	23.0	.622	15.8	.496	12.6
GE203310	.717	18.2	.465	11.8	.638	16.2	.378	9.6	.850	21.6	.650	16.5	.504	12.8

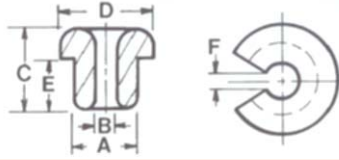


# Double Flanged Eyelets



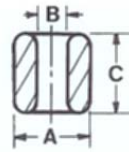
Part No.	A		B		C		D		E	
	inches	mm	inches	mm	inches	mm	inches	mm	inches	mm
DFE4000	.205	5.2	.079	2.0	.138	3.5	.193	4.9	.099	2.5
DFE4001	.213	5.4	.095	2.4	.173	4.4	.126	3.2	.039	1.0
DFE4001-1	.272	6.9	.118	3.0	.236	6.0	.118	3.0	.039	1.0
DFE4001-2	.276	7.0	.118	3.0	.197	5.0	.362	9.2	.236	6.0
DFE4001-3	.299	7.6	.118	3.0	.197	5.0	.138	3.5	.063	1.6
DFE4001-4	.315	8.0	.126	3.2	.240	6.1	.158	4.0	.047	1.2
DFE4002	.315	8.0	.126	3.2	.240	6.1	.189	4.8	.067	1.7
DFE4003	.315	8.0	.126	3.2	.244	6.2	.165	4.2	.059	1.5
DFE4004	.327	8.3	.142	3.6	.221	5.6	.256	6.5	.063	1.6
DFE4005	.319	8.1	.158	4.0	.240	6.1	.217	5.5	.099	2.5
DFE4006	.319	8.1	.158	4.0	.236	6.0	.134	3.4	.055	1.4
DFE4007	.315	8.0	.126	3.2	.236	6.0	.169	4.3	.079	2.0
DFE4008	.319	8.1	.157	4.0	.240	6.1	.217	5.5	.102	2.6
DFE4008-1	.319	8.1	.157	4.0	.240	6.1	.217	5.5	.102	2.6
DFE4008-2	.327	8.3	.142	3.6	.236	6.0	.126	3.2	.043	1.1
DFE4009	.355	9.0	.130	3.3	.240	6.1	.256	6.5	.130	3.3
DFE4009-1	.359	9.1	.189	4.8	.264	6.7	.158	4.0	.051	1.3
DFE4009-2	.355	9.0	.158	4.0	.268	6.8	.366	9.3	.209	5.3
DFE4009-3	.374	9.5	.185	4.7	.331	8.4	.185	4.7	.059	1.5
DFE4009-4	.410	10.4	.193	4.9	.359	9.1	.130	3.3	.043	1.1
DFE4009-5	.410	10.4	.193	4.9	.276	7.0	.209	5.3	.099	2.5
DFE4010	.410	10.4	.193	4.9	.343	8.7	.158	4.0	.035	0.9
DFE4010-0	.410	10.4	.193	4.9	.276	7.0	.197	5.0	.078	2.0
DFE4010-1	.469	11.9	.232	5.9	.355	9.0	.244	6.2	.078	4.5
DFE4010-2	.512	13.0	.244	6.2	.394	10.0	.276	7.0	.138	2.0
DFE4010-3	.512	13.0	.256	6.5	.394	10.0	.465	11.8	.248	3.5
DFE4010-4	.520	13.2	.284	7.2	.418	10.6	.236	6.0	.099	6.3
DFE4010-5	.591	15.0	.307	7.8	.453	11.5	.276	7.0	.099	2.5
DFE4010-8	.687	17.5	.250	6.4	.500	12.7	.437	11.1	.250	2.5
DFE4011	.729	18.5	.394	10.	.591	15.0	.236	6.0	.118	6.4
DFE4011-1	.729	18.5	.390	9.9	.591	15.0	.236	6.0	.118	3.0
DFE4011-2	.788	20.0	.236	6.0	.591	15.0	.473	12.0	.217	3.0
DFE4012	.950	24.1	.567	14.4	.788	20.0	.276	7.0	.158	5.5
DFE4012-1	.965	24.5	.575	14.6	.808	20.5	.284	7.2	.158	4.0
DFE4017	1.12	28.6	.563	14.3	.819	20.8	.531	13.5	.248	4.0
DFE4020	1.31	33.2	1.03	26.1	1.22	31.0	.209	5.3	.079	6.3
DFE4023	1.32	33.5	.800	20.3	1.18	30.0	.415	10.5	.250	5.3
DFE4030	1.86	47.1	1.50	38.1	1.77	45.0	.236	6.0	.079	2.0

# Slotted Eyelets



Part No.	A		B		C		D		E		F	
	inches	mm	inches	mm	inches	mm	inches	mm	inches	mm	inches	Mm
SE3000	.138	3.5	.079	2.0	.165	4.2	.209	5.3	.118	3.0	.032	0.8
SE3000-1	.138	3.5	.039	1.0	.165	4.2	.209	5.3	.118	3.0	.032	0.8
SE3001	.150	3.8	.063	1.6	.165	4.2	.205	5.2	.122	3.1	.032	0.8
SE3001-1	.256	6.5	.118	3.0	.303	7.7	.307	7.8	.252	6.4	.102	2.6
SE3001-2	.232	5.9	.158	4.0	.240	6.1	.355	9.0	.177	4.5	.032	0.8
SE3001-3	.232	5.9	.118	3.0	.240	6.1	.355	9.0	.173	4.4	.032	0.8
SE3001-4	.232	5.9	.118	3.0	.079	2.0	.394	10.0	.039	1.0	.047	1.2
SE3002	.268	6.8	.158	4.0	.256	6.5	.362	9.2	.197	5.0	.067	1.7
SE3002-1	.236	6.0	.118	3.0	.169	4.3	.315	8.0	.118	3.0	.059	1.5
SE3002-2	.268	6.8	.158	4.0	.339	8.6	.362	9.2	.276	7.0	.067	1.7
SE3003	.268	6.8	.158	4.0	.118	3.0	.362	9.2	.043	1.1	.067	1.7
SE3004	.276	7.0	.059	1.5	.197	5.0	.359	9.1	.126	3.2	.010	0.5
SE3004-1	.288	7.3	.150	3.8	.315	8.0	.378	9.6	.252	6.4	.039	1.0
SE3005	.288	7.3	.126	3.2	.177	4.5	.390	9.9	.102	2.6	.059	1.5
SE3006	.299	7.6	.122	3.1	.386	9.8	.402	10.2	.284	7.2	.035	0.9
SE3006-0	.299	7.6	.197	5.0	.426	10.8	.355	9.0	.378	9.6	.189	4.8
SE3006-1	.307	7.8	.126	3.2	.221	5.6	.406	10.3	.142	3.6	.039	1.0
SE3006-3	.311	7.9	.126	3.2	.221	5.6	.406	10.3	.142	3.6	.039	1.0
SE3006-4	.311	7.9	.028	0.7	.158	4.0	.485	12.3	.099	2.5	.028	0.7
SE3007	.319	8.1	.126	3.2	.217	5.5	.414	10.5	.138	3.5	.039	1.0
SE3008	.319	8.1	.126	3.2	.256	6.5	.414	10.5	.177	4.5	.039	1.0
SE3009	.355	9.0	.197	5.0	.185	4.7	.433	11.0	.114	2.9	.079	2.0
SE3010	.374	9.5	.185	4.7	.386	9.8	.496	12.6	.280	7.1	.130	3.3
SE3010-1	.382	9.7	.213	5.4	.229	5.8	.563	14.3	.138	3.5	.055	1.4
SE3011	.394	10.0	.158	4.0	.319	8.1	.473	12.0	.276	7.0	.059	1.5
SE3011-1	.394	10.0	.158	4.0	.414	10.5	.473	12.0	.374	9.5	.059	1.5
SE3012	.394	10.0	.236	6.0	.177	4.5	.469	11.9	.110	2.8	.099	2.5
SE3012-1	.406	10.3	.221	5.6	.339	8.6	.552	14.0	.276	7.0	.158	4.0
SE3013	.516	13.1	.181	4.6	.477	12.1	.678	17.2	.370	9.4	.059	1.5
SE3013-1	.524	13.3	.181	4.6	.477	12.1	.678	17.2	.370	9.4	.059	1.5
SE3013-2	.552	14.0	.433	11.0	.236	6.0	.670	17.0	.118	3.0	.355	9.0
SE3014	.603	15.3	.382	9.7	.528	13.4	.768	19.5	.386	9.8	.102	2.6
SE3017	.741	18.8	.366	9.3	1.09	27.7	1.11	28.2	.812	20.6	.197	5.0

# Tube Eyelets



Part No.	A		B		C	
	inches	mm	inches	mm	inches	mm
TP112	.268	6.8	.158	4.0	.630	16.0
TP115	.307	7.8	.162	4.1	.552	14.0
TP120	.307	7.8	.197	5.0	.591	15.0
TP125	.307	7.8	.162	4.1	.788	20.0
TP146-2	.315	8.0	.217	5.5	.788	20.0
TP130	.335	8.5	.244	6.2	.650	16.5
TP134	.374	9.5	.248	6.3	.630	16.0
TP138	.374	9.5	.221	5.6	.394	10.0
TP140	.374	9.5	.221	5.6	.788	20.0
TP142	.374	9.5	.248	6.3	.591	15.0
TP146-1	.374	9.5	.201	5.1	.812	20.6
TP144	.382	9.7	.217	5.5	.394	10.0
TP144-1	.386	9.8	.217	5.5	.973	24.7
TP149	.386	9.8	.236	6.0	1.10	28.0
TP147	.386	9.8	.217	5.5	.626	15.9
TP147-2	.386	9.8	.217	5.5	.788	20.0
TP150	.386	9.8	.236	6.0	.946	24.0
TP152	.386	9.8	.236	6.0	1.08	27.5
TP154	.386	9.8	.236	6.0	.788	20.0
TP156	.386	9.8	.213	5.4	.788	20.0
TP145	.386	9.8	.217	5.5	1.10	28.0
TP146	.390	9.9	.217	5.5	.867	22.0
TP158	.392	9.95	.256	6.5	.985	25.0
TP160	.392	9.95	.256	6.5	.788	20.0
TP145-1	.394	10.0	.221	5.6	1.25	31.7
TP162	.394	10.0	.236	6.0	1.10	28.0
TP146-3	.394	10.0	.197	5.0	.985	25.0
TP164	.394	10.0	.217	5.5	.788	20.0
TP166	.398	10.1	.276	7.0	.867	22.0
TP170	.414	10.5	.256	6.5	.985	25.0
TP172	.429	10.9	.256	6.5	.591	15.0
TP174	.485	12.3	.331	8.4	.906	23.0
TP176	.500	12.7	.250	6.35	1.50	38.1
TP178	.504	12.8	.331	8.4	.788	20.0
TP180	.532	13.5	.236	10.0	.623	15.8
TP182	.701	17.8	.362	9.2	.788	20.0
TP184	.780	19.8	.473	12.0	1.02	26.0
TP186	.985	25.0	.709	18.0	.670	17.0